



NATIONAL POWER CORPORATION

SUPPLEMENTAL /BID BULLETIN NO. 1

to the Bid Documents for the:

**SUPPLY AND DELIVERY OF VARIOUS MECHANICAL SPARE PARTS FOR MAN
GENERATING SETS UNDER PR NO. S3-WMO25-003/ REF. PB250226-NA00038**

27 February 2025

All prospective bidders and authorized copy holders of the Bid Documents of the above-mentioned project are hereby advised of changes in the provisions of the bid documents, to wit:

A. SCHEDULE OF BID SUBMISSION/OPENING

FROM	TO
04 March 2025 09:30 A.M. Kanao Room	<u>11 March 2025</u> 09:30 A.M. Kanao Room

B. QUANTITY IN SECTION VI – TECHNICAL SPECIFICATIONS PART I – TECHNICAL SPECIFICATIONS AND PART II – TECHNICAL DATA SHEETS (Detailed Breakdown of Item 86. O-RING, FOR 500KW MAN CXZ L20/27)

DESCRIPTION	FROM	TO
O-RING IMPULSE TRANSMITTER (PN: MAN356-46X4N)	1 PC	<u>18 PC</u>

C. DELIVERY PERIOD

FROM	TO
One Hundred Fifty (150) Calendar Days	<u>One Hundred Eighty (180) Calendar Days</u>



NATIONAL POWER CORPORATION

Gabriel Y. Itchon Building
Senator Miriam P. Defensor-Santiago Avenue (formerly BIR Road)
corner Quezon Avenue, Diliman, Quezon City 1100, Philippines
Tel. Nos. (632) 8921-3541 to 80 • Fax No. (632) 8921-2468
Website: www.napocor.gov.ph



**D. ADDITIONAL INFORMATION FOR ITEM 90. REGULATOR WOODWARD UG8,
FOR 500KW MAN CXZ L20/27**

Please see attached pictures of nameplate and regulator. (2 pages)

All other terms and conditions shall remain the same.

For the information and guidance of all authorized copy holders of the Bid Documents and prospective bidders.

For the Bids and Awards Committee:


LARRY I. SABELLINA

Vice President, Mindanao Generation Group and
Chairman, Bids and Awards Committee

CSIC
CXZ

柴油发电机组
DIESEL GENERATING SET

型号 TYPE	ICF500J-900	编号 NO.	05-38
功率 POWER	500 kW	转速 SPEED	900 RPM
电压 VOLT.	180 V	频率 FREQ.	60 Hz
质量 MASS	13500 kg	日期 DATE	2005-11

新中动力机厂
XINGZHONG POWER MACHINE PLANT
中国 上海 SHANGHAI CHINA

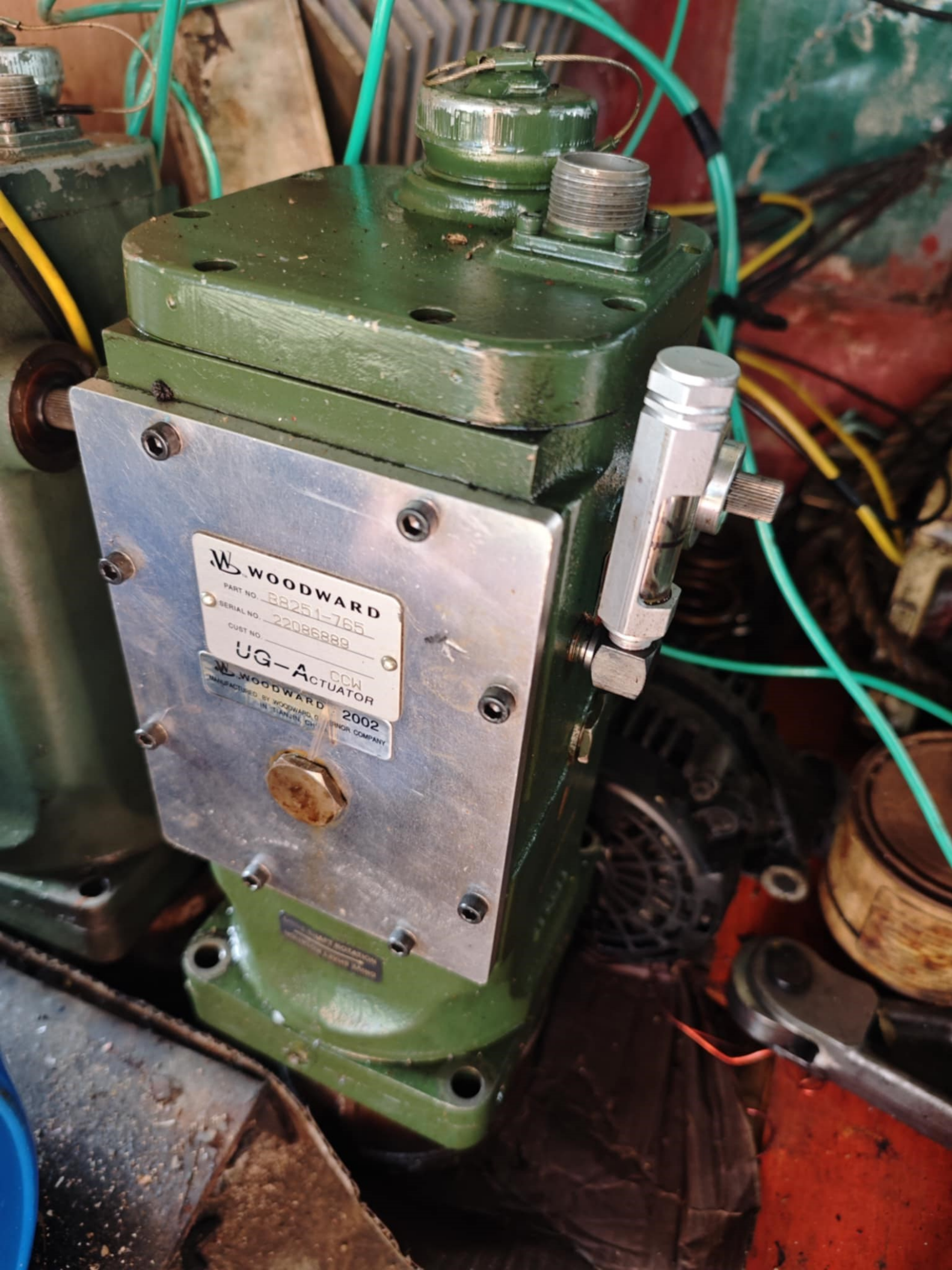
船检钢印
MARK OF ACCEPTANCE

停车十分钟
过热, 须排除

Open the cover
down the engine
don't start it
remedied the cause

CX

制造厂 Engine Builder	
机型 Engine Type	6L
功率 Rating	5



WOODWARD
PART NO. 88251-765
SERIAL NO. 22086889
CUST NO. UG-A CCW
WOODWARD 2002
MANUFACTURED BY WOODWARD, INC. IN TIANJIN, CHINA
PRIORITY COMPANY